

Table of Contents: Volume 25 Issue 2 February 2023

Review

- 105 Adipose-derived stem cells applied in skin diseases, wound healing and skin defects: a review**
I Schneider, M Calcagni, J Buschmann

Short Report

- 120 Cell monitoring with optical coherence tomography**
M Brehove, C Rogers, R Menon, P Minor, J Allington, A Lam, J Vielmetter, N Menon

Full-Length Articles

Basic Research

- 125 Time course and mechanistic analysis of human umbilical cord perivascular cell mitigation of lipopolysaccharide-induced systemic and neurological inflammation**
H Shuster-Hyman, F Siddiqui, D Gallagher, A Gauthier-Fisher, CL Librach
- 138 CD73 activity of mesenchymal stromal cell-derived extracellular vesicle preparations is detergent-resistant and does not correlate with immunomodulatory capabilities**
FN Bauer, T Tertel, O Stambouli, C Wang, R Dittrich, S Staubach, V Börger, DM Hermann, S Brandau, B Giebel
- 148 Cytotoxic activity of anti-mucin 1 chimeric antigen receptor T cells expressing PD-1-CD28 switch receptor against cholangiocarcinoma cells**
K Supimon, T Sangsuwannukul, J Sujjitjoon, T Chieochansin, M Junking, P-thai Yenchitsomanus

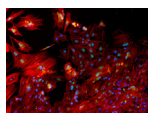
- 162 Magnetically empowered bone marrow cells as a micro-living motor can improve early hematopoietic reconstitution**
Q Mai, Z Wang, Q Chen, J Zhang, D Zhang, C Li, Q Jiang

Translational Research

- 174 Rapid culture of human keratinocytes in an autologous, feeder-free system with a novel growth medium**
V Feisst, I Kelch, E Dunn, E Williams, S Meidinger, C-JJ Chen, R Girvan, L Zhou, H Sheppard, M Locke, PR Dunbar

Clinical Research

- 185 Efficacy and safety of chimeric antigen receptor T-cell therapy targeting CD19/CD22 in refractory/relapsed transformed aggressive B-cell lymphoma**
H Xu, Q Lv, L Huang, W Cao, J Wang, F Meng, C Li, M Zheng, L Chen, K Mu, J Cheng, L Zhu, J Zhou, Y Zhang, N Wang, Y Cao
- 192 Cytokine profiles are associated with prolonged hematologic toxicities after B-cell maturation antigen targeted chimeric antigen receptor-T-cell therapy**
L Wang, R Hong, L Zhou, Y Wang, Y Lv, F Ni, M Zhang, H Zhao, S Ding, AH Chang, H Xu, Y Hu, G Wei, H Huang
- 202 Adjuvant cytokine-induced killer cell immunotherapy improves long-term survival in patients with stage I–II non-small cell lung cancer after curative surgery**
J Huang, X Zhao, Z Zhang, S Yang, X Chen, C Shen, L Wang, Y Qi, Y Zhang



Cover Image: Polygonal-shaped lung epithelial cells derived from human iPS cells grown in 2-D culture. The progenitors express EpCAM (green); actin filaments (red), and nucleus counterstained by DAPI (blue). Photo Credit: Miriel Ho (Canada).

Table of Contents (continued)

Manufacturing

- 210** Development of a personalized dendritic cell vaccine and single-cell RNA sequencing–guided assessment of its cell type composition

Q Li, C Yang, H Tian, J Jiang, P Li, X Zhu, T Lei, R Yin, P Ding, P Bai, Q Li

Regulatory Policies

- 220** Comparison of guidelines for biological ancillary materials used for the manufacture of gene and cellular therapy products in Asia

T Tanaka, K Yoshimura, R Chang, B Choi, Y Gai, PK Gupta, U Kolkundkar, S-M Lee, S Lee, W Liao, X Zhao, K Takakura